

# Kensington Terrace

4142 Adams Avenue - San Diego, California 92116

# OFFICE For Lease



## Description

- Boutique office building located in the heart of Kensington on the corner of Adams Avenue and Marlborough Drive.
- Convenient freeway access and minutes from Downtown.
- Project includes up to 18,000 gross square feet of office space (suites from 1,000 sf and greater) and first floor restaurant/retail space.
- Onsite parking in addition to ample street parking.
- Within walking distance to multiple retail amenities.
- Luxurious office lobby, elevator served and multiple balconies.

Eric Vann

858 558 5627

[eric.vann@cushwake.com](mailto:eric.vann@cushwake.com)

Derek Applbaum

858 558 5651

[derek.applbaum@cushwake.com](mailto:derek.applbaum@cushwake.com)



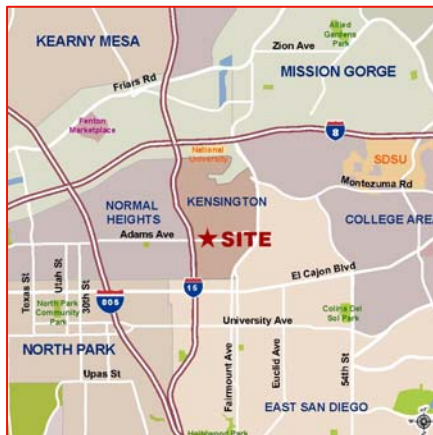
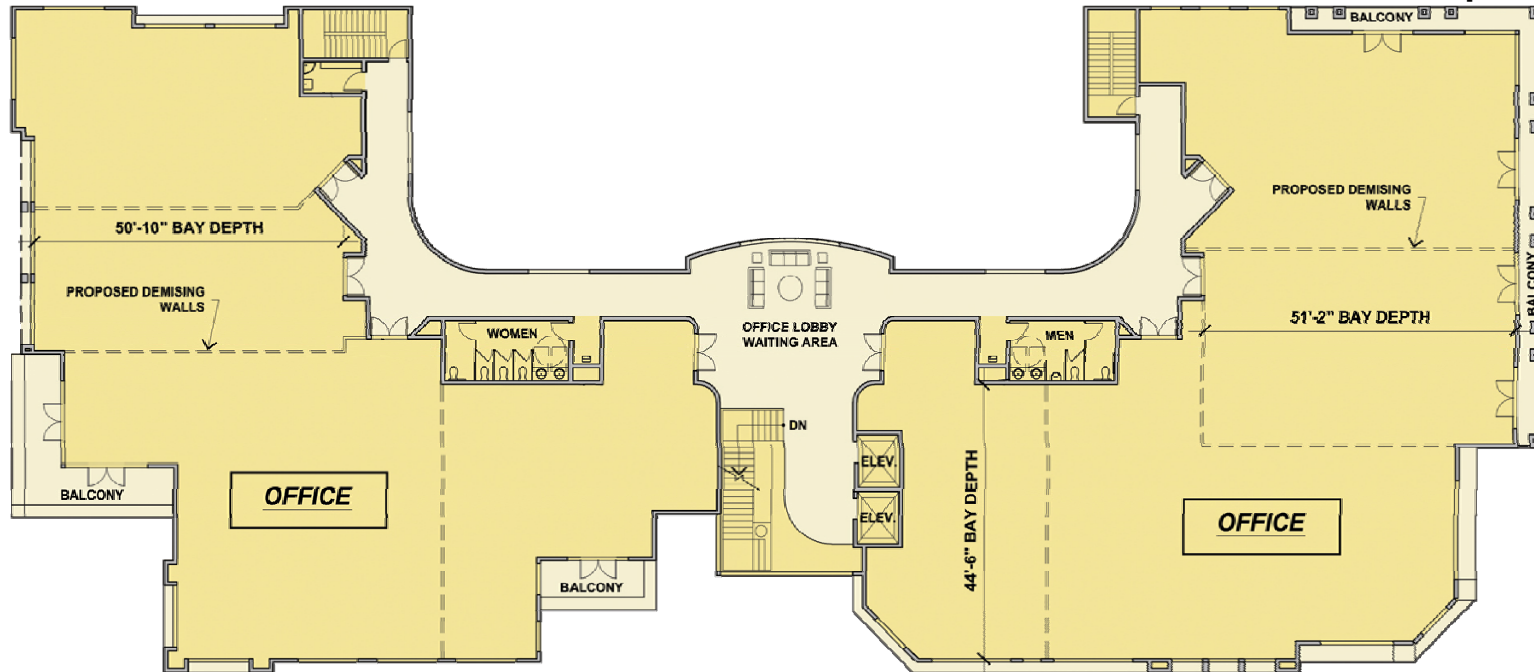
This information is compiled from data that we believe to be correct but no liability is assumed by this Company as to accuracy of such data.

# Kensington Terrace

4142 Adams Avenue - San Diego, California 92116



## Second Floor Office Space



- **Available:** Up to 18,000 sf | Suites from 1,000 sf and greater
- **Lease Rate:** Negotiable

For more information please contact:

**Eric Vann**  
(858) 558 - 5627  
eric.vann@cushwake.com

**Derek Applbaum**  
(858) 558 - 5651  
derek.applbaum@cushwake.com